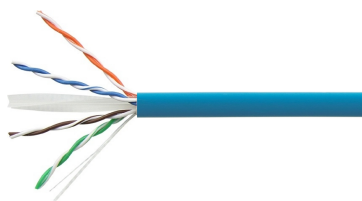


1427254-6 | CS31CM BLU C6 4/23 U/UTP RIB 305M



Copper Cable, category 6, 4 pair, UTP, CM rated, 23 AWG, 305 m RIB, blue

Product Classification

Regional Availability	Asia Latin America
Portfolio	NETCONNECT®
Product Type	Twisted pair cable

General Specifications

Product Number	CS31CM
ANSI/TIA Category	6
Cable Component Type	Horizontal
Cable Type	U/UTP (unshielded)
Conductor Type, singles	Solid
Conductors, quantity	8
Jacket Color	Blue
Pairs, quantity	4
Transmission Standards	ANSI/TIA-568.2-D CENELEC EN 50288-6-1 ISO/IEC 11801 Class E

Dimensions

Cable Length	304.8 m 1000 ft
Diameter Over Insulated Conductor	1.029 mm 0.041 in
Diameter Over Jacket, nominal	6.401 mm 0.252 in
Conductor Gauge, singles	23 AWG

Electrical Specifications

Operating Voltage, maximum	80 V
Remote Powering	Fully complies with the recommendations set forth by IEEE 802.3bt (Type 4) for the safe delivery of power over LAN cable when installed according to ISO/IEC 14763-2, CENELEC EN 50174-1, CENELEC EN 50174-2 or TIA TSB-184-A

Electrical Cable Performance

CS	CommScope	NEXT	Near End Crosstalk (dB/100m)
STD	Refers to the standard value listed under Transmission Standards in the Electrical Specifications above	PSNEXT	Power Sum Near End Crosstalk (db/100m)
TYP	Typical Electrical Performance	ACRF	Attenuation to Crosstalk Ratio - Far End (dB/100m)
IL	Insertion Loss (dB/100m)	RL	Return Loss (dB)
ACR	Attenuation to Crosstalk Ratio (dB/100m)	ELTCTL	Equal Level Transverse Conversion Transfer Loss (dB/100m)
PSACR	Power Sum Attenuation to Crosstalk Ratio (dB/100m)		
PSACRF	Power Sum Attenuation to Crosstalk Ratio - Far End (dB/100m)		
TCL	Transverse Conversion Loss (dB/100m)		

Freq. MHz	IL		NEXT		ACR		PSNEXT		PSACR		ACRF		PSACRF		RL		TCL		ELTCTL	
	CS	STD	CS	STD	CS	STD	CS	STD	CS	STD	CS	STD	CS	STD	CS	STD	CS	STD	CS	STD
1	2	2	75.3	74.3	73.3	72.3	72.3	72.3	70.3	70.3	68	67.8	65	64.8	20	20	40	40	35	35
4	3.8	3.8	66.3	65.3	62.5	61.5	63.3	63.3	59.5	59.5	56	55.8	53	52.8	23	23	40	40	23	23
8	5.3	5.3	61.8	60.8	56.4	55.4	58.8	58.8	53.4	53.4	49.9	49.7	46.9	46.7	24.5	24.5	40	40	16.9	16.9
10	6	6	60.3	59.3	54.3	53.3	57.3	57.3	51.3	51.3	48	47.8	45	44.8	25	25	40	40	15	15
16	7.6	7.6	57.2	56.2	49.7	48.7	54.2	54.2	46.7	46.7	43.9	43.7	40.9	40.7	25	25	38	38	10.9	
20	8.5	8.5	55.8	54.8	47.3	46.3	52.8	52.8	44.3	44.3	42	41.8	39	38.8	25	25	37	37	9	9
25	9.5	9.5	54.3	53.3	44.8	43.8	51.3	51.3	41.8	41.8	40	39.8	37	36.8	24.3	24.3	36	36	7	7
31.25	10.7	10.7	52.9	51.9	41.2	41.2	49.9	49.9	39.2	39.2	38.1	37.9	35.1	34.9	23.6	23.6	35.1	35.1		
62.5	15.4	15.4	48.4	47.4	33	32	45.4	45.4	30	30	32.1	31.9	29.1	28.9	21.5	21.5	32	32		
100	19.8	19.8	45.3	44.3	25.5	24.5	42.3	42.3	22.5	22.5	28	27.8	25	24.8	20.1	20.1	30	30		
155	25.2	25.2	42.4	41.4	17.3	16.3	39.4	39.4	14.3	14.3	24.2	24	21.2	21	18.8	18.8	28.1	28.1		
200	29	29	40.8	39.8	11.8	10.8	37.8	37.8	8.8	8.8	22	21.8	19	18.8	18	18	27	27		
250	32.8	32.8	39.3	38.3	6.5	5.5	36.3	36.3	3.5	3.5	20	19.8	17	16.8	17.3	17.3	26	26		

Material Specifications

Conductor Material	Bare copper
Insulation Material	Polyolefin
Jacket Material	PVC

Environmental Specifications

Operating Temperature	-20 °C to +60 °C (-4 °F to +140 °F)
Flame Test Method	CM

Packaging and Weights

Packaging Type	Reel in box
-----------------------	-------------

Regulatory Compliance/Certifications

Agency	Classification
CHINA-ROHS	Below maximum concentration value

1427254-6 | CS31CM BLU C6 4/23 U/UTP RIB 305M

REACH-SVHC

Compliant as per SVHC revision on www.commscope.com/ProductCompliance

ROHS

Compliant

UK-ROHS

Compliant

